



Cottingham
High School

Parent Guide

Transition
2026/27



**SHAPING
POSITIVE
FUTURES**



Contents

04	Welcome to Cottingham	19	Frequently Asked Questions
06	Our Vision, Mission and Values	20	Daily Routines
08	Key People and Pastoral Care	21	Equipment
10	Strong Attendance	22	Our Uniform
12	Transition and Induction	23	Our PE Kit
13	Communication	25	Extracurricular and Enrichment
14	Curriculum	26	Our House System
15	Assessment and Outcomes	28	School Payments
16	Aim to Excel	29	Catering
17	Rewards & Sanctions	30	Term Dates 2026/27
18	Student Well-being		



Shaping Positive Futures



Welcome to our new Cottingham learners.

Cottingham High School is part of The Consortium Academy Trust. At The Consortium Academy Trust, we are ambitious about the future - creating learning environments and excellence in teaching and learning that provide our children and young people with the best chance at a successful future.

Our vision is **Shaping Positive Futures** as we strongly believe our sole purpose is supporting children and young people to achieve their ambitions. This vision gives us a shared sense of purpose and direction and is something we are all proud to be a part of.

Across our community of ten schools our people are doing remarkable things by being fully engaged in work that transforms lives, supporting children and young people to grow in confidence and develop into citizens we are proud of.

We are ambitious to shape positive futures so each young person can excel and achieve their goals in education and beyond and we welcome you as you begin to explore and develop your interests and passions at the start of your education journey with us.

Lizann Lawson,
CEO, The Consortium Academy Trust

“As a Trust we share resources and expertise, to ensure our young people experience inclusive learning opportunities alongside a challenging, fun and aspirant education.”



Welcome to **COTTINGHAM**

We are delighted to be welcoming you and your child to Cottingham High School in September.

We would like to take this opportunity to welcome you to our school and the community that we serve. Though the transition to secondary school can be a big step, we are here to support you and your child every step of the journey.

The success of all students is built upon a strong working relationship between school and home, we are keen to work with you to ensure that our students are excited, happy and proud to attend Cottingham High School and staff are proud to work here.



I am proud to lead a school that is built on our values, 'Ambition, Pride, Respect', which is designed to shape our attitudes and actions in every situation, for every member of our school community.



Ambition, Pride, Respect

“Our aim is to be the school of choice for our community based on our care, standards and outcomes. We believe that this approach will empower our students and staff to excel in education and beyond and they are embedded in our school culture.”

Our aim is to be the school of choice for our community based on our care, standards and outcomes.

We believe that this approach will empower our students and staff to excel in education and beyond and they are embedded in our school culture.

We profoundly believe that success is not predetermined, and circumstances will never be a barrier in our commitment to constant improvement and achievement.

Mr Jay Kerby, Headteacher



Ofsted

Read our report



Our Vision

SHAPING POSITIVE FUTURES

Our Mission

We put our students first. We have a supportive, yet challenging environment to allow everyone in our school community to:

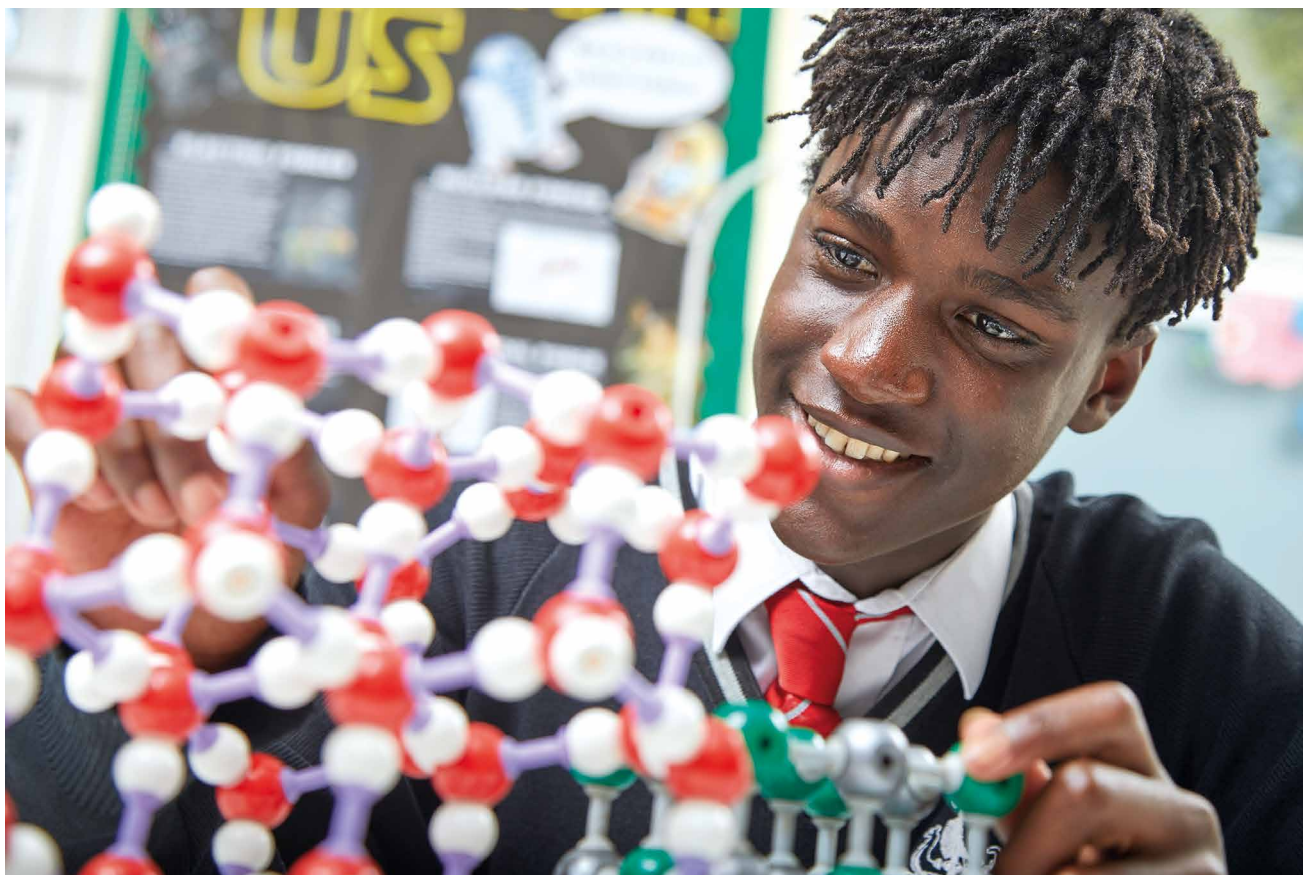
- Flourish and believe that they have every chance of success.
- Work together, through our values, so that they can achieve more than can be done individually.
- Work within a supportive culture where taking appropriate risk is seen as a strength.
- Be proud of themselves, their peers, our Trust, and our local communities.

Our Values

AMBITION
PRIDE
RESPECT



'Shaping Positive Futures.'



Key People

If you have any queries regarding your child's transition process into Year 7 please do not hesitate to contact us via email: CHSTransition@cottinghamhigh.net

Senior Leadership Team



Mr Kerby
Headteacher



Mr McKelvie
Deputy Headteacher



Mrs White
Deputy Headteacher



Mr Clement
Assistant Headteacher



Mr Hill
Assistant Headteacher



Mr Wort
Assistant Headteacher



Mrs Cassidy (DSL)
Designated Safeguarding Lead

SENDCo Team



Mr Clement
SENDCO



Miss Ripper
Assistant SENDCO



Miss Marshall
Assistant SENDCO



“The whole Pastoral Team is really looking forward to meeting all our new students.”

Pastoral Care

We have high expectations of all students at Cottingham High School and believe that all our students will achieve with us and go on to be successful, well rounded young people.

Your child is starting the next stage of their school journey in good hands. The whole Pastoral Team is really looking forward to meeting all our new students. The Pastoral Team is here to help your child settle into life at secondary school and welcome them into the Cottingham High School family.

Year 7 Team



Miss France

Pastoral Manager



Mr Wright

Progress Leader



Mr Hill

Senior Leadership Team Link Member



Strong Attendance

Students who attend school regularly have been proven to do better in school. As a result of this, the minimum attendance target for all students at Cottingham is 97%.

There is a clear link between high levels of attendance and academic achievement. Research shows that students do not achieve as well in their education and in public examinations, the more school absence they have. For example, 91% of students with fewer than six days absences across a school year went on to gain at least five GCSEs. Of the students who had more than twelve days absence, only 36% achieved at least five GCSEs.

However, if your child is absent due to illness you must contact the school first thing in the morning, informing them the reason for the absence and how long you expect your child to be absent for. It is also helpful if you let us know the nature of the illness to prevent it being spread to others in school.

Telephone: 01482 847498

Email: office@cottinghamhigh.net

Alternatively, you can send a message through Arbor regarding your child's absence.

Please be aware if you do not inform the school of any absence and your child is marked absent, you will receive a text or phone call.

You can help by:

- Encouraging your child to aim for 100% attendance
- Arranging holidays and medical appointments outside of school time
- Keeping in close contact with the school if there are issues at home which may affect your child's attendance



Ambition
Pride
Respect

MOMENTS MATTER, ATTENDANCE COUNTS

STUDENTS WITH



97%
attendance

ARE LIKELY TO
**EXCEED THEIR
EXPECTED GRADES**



95-97%
attendance

ARE LIKELY TO
**MEET THEIR
EXPECTED GRADES**



90-95%
attendance

ARE LIKELY TO
**FALL BELOW THEIR
EXPECTED GRADES**



80%
attendance below

ACHIEVE, ON AVERAGE
**2 GRADES WORSE PER
SUBJECT THAN THOSE
WITH 97% ATTENDANCE**



Transition & Induction



We look forward to seeing your child in our July Induction week.

We work closely with primary school staff to ensure a smooth transition to secondary school for your child.

We have been gathering information on how your child has progressed during their time at primary school, so we can thoroughly plan to meet all their needs as they start their journey at Cottingham.

This year, our Year 6 Transition Event will be held on Wednesday 8 July to Friday 10 July 2026. We look forward to meeting your child then.

Primary staff will further support your child's transition by grouping students into twos or threes as they know who will work well together. All the information collated is used to inform how we create our tutor and teaching groups.

A key aim of the event is that students familiarise themselves with our buildings, routines and staff so that they are well prepared for their first day in September. They will have sample lessons, take part in team building activities and start to make new friendships, making it a smoother transition for them.

Communication



A strong and effective partnership between home and school is highly valued by everyone.

Achieving this ensures that we can all support your child as they progress through school and develop into confident and successful young adults. You will receive a home school agreement which outlines our expectations and how you can support your child at Cottingham High School.

We recommend that you regularly check our school website to remain up to date with information regarding the school. Any updates such as key events, latest news, reminders and notices to parents and students are available via our website: www.cottinghamhigh.net

The school also uses social media regularly to update parents and carers about all of the exciting events happening. Follow us on Facebook at **Cottingham High School** and Instagram at **cottingham.high**.

Direct communications are sent home through our parent portal app Arbor, which negates the need for traditional letters. You will receive a fortnightly report by email which will update you on attendance, behaviour and rewards data.

To ensure effective communication, please ensure that we have a current email address, telephone number and home address. The school telephone is **01482 847498**. Details of our Data Protection Policy are available on our website.

Please email office@cottinghamhigh.net with any enquiries and it will be directed to the most appropriate member of staff including the Headteacher, Leadership Team and Pastoral Staff.

You can help by:

- Ensuring you have the Arbor App
- Being available to discuss the move from primary to secondary school with your child and make a note of any questions you might have to discuss with a member of staff
- Regularly checking the school's website, Instagram account and Facebook page.
- Attending the Parent and Carers' Evenings in school
- Encouraging good attendance in school and informing us as soon as possible regarding any absences



Keep up to date with school life and activities by regularly visiting our Facebook page, Instagram and website.



Curriculum

A full copy of the curriculum will be available in a curriculum booklet on our school website.

Everything we do at Cottingham High School will help shape a positive future for life beyond school.

Our curriculum intent is built around our school values:

'Ambition, Pride, Respect'

All students at Cottingham High School are entitled to an engaging, broad, balanced, rich, appropriately challenging and ambitious curriculum, with a strong academic core, delivered by specialists who are passionate about their subject.

Our curriculum clearly sets out the knowledge and skills that your child will gain at each key stage, how this will be taught and assessed, and how effectively they apply the knowledge and skills they have acquired. Our aims are to provide an effective and enjoyable education where your child achieves highly, as well as equipped with the knowledge and cultural capital they need to be confident and succeed in life.

Our curriculum is designed sequentially so that new knowledge and skills build on what has been taught before through a mastery approach. We have designed your child's curriculum to reflect their context and to combat social disadvantage by addressing gaps in their knowledge and skills. This includes an emphasis on reading and vocabulary-rich programmes of study and a focus on careers education in each curriculum area, which will raise aspirations.

Above all, we want your child to be enthusiastic about their studies and to instil in them, a self-belief, and an appetite for life-long learning.

"Our curriculum is designed sequentially so that new knowledge and skills build on what has been taught before through a mastery approach."

Assessments and Outcomes

In Key Stage 3 students are assessed in each subject area.

All students will have aspirational targets generated using their prior academic data and through the cognitive assessment tests they will take as they begin their journey at Cottingham High.

Students are assessed on the work they have completed throughout the year and awarded with a judgement of emerging, developing, meeting or exceeding. This judgment is based on their target grade and indicates the areas they are succeeding in and those they need to work on to achieve their true potential.

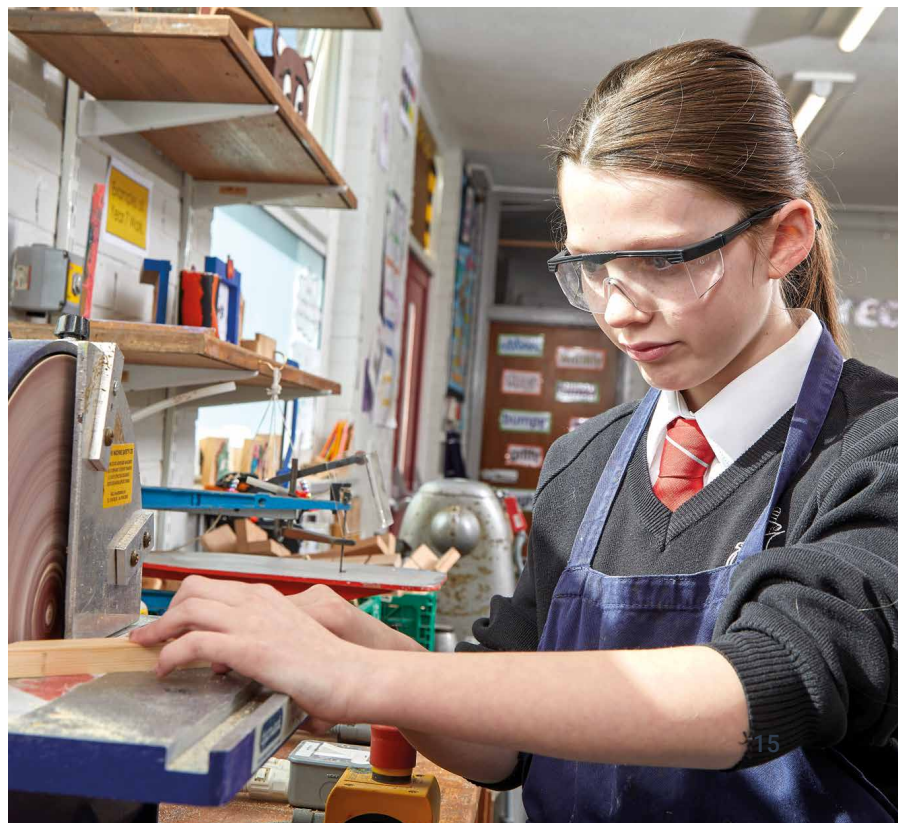
Twice a year student performance will be reviewed and collated into a report that you will receive. Each subject area utilises regular internal assessments and if there are specific concerns, progress meetings will be arranged.

The role of parents/carers is crucial in ensuring a positive outcome for your child, particularly in supporting your child's attendance at school each day and in completing work outside of school including homework and coursework.

You can help by:

- By providing a quiet space to complete work at home
- Encouraging your child to speak to their class teachers or tutor if they have any concerns
- Providing help and encouragement when homework is being done, and regularly checking to ensure this is completed on time
- Reminding them that they are able to access the school ICT systems and the Library before and after school, and also at break and lunch times. There is a Homework Club after school that students can attend if they need to

“The role of parents/carers is crucial in ensuring a positive outcome for the student, particularly in ensuring that your child attends school regularly and complete work outside school, including coursework and homework.”





A HIGHLY MOTIVATED student makes an **EXCELLENT** effort.

Excellent effort means being committed to getting the most out of all learning opportunities available. It is what all students should aim for.

An **ENGAGED** student makes a **GOOD** effort.

Good effort means being a responsible and hardworking student who tries their best all of the time.

A PASSIVE student makes an **INSUFFICIENT** effort.

Insufficient effort means that a student is probably doing most of what they are supposed to do but is not pushing themselves or making the most of the opportunities available.

A DISENGAGED student currently makes a **POOR** effort.

Poor effort means that a student needs support or intervention to become a more responsible student.

Aim to Excel

Engagement Grades (Attitude to Learning):

<p>1 Highly motivated (Excellent effort)</p> <ul style="list-style-type: none"> • Excellent focus • Seeks challenge • Asks questions to extend thinking • Approaches learning with active interest • Invites feedback • Reviews own progress, acting on the outcomes • Seeks own solutions to problems • Sets an example • Often helps others 	<p>2 Engaged (Good effort)</p> <ul style="list-style-type: none"> • Good focus • Responds positively to challenging activities • Answers question • Shows a desire to improve • Takes action based on feedback • Seeks help when needed • Follows all instructions • Listens carefully • Sometimes helps others
<p>3 Passive (Insufficient effort)</p> <ul style="list-style-type: none"> • Not always focused • Avoids challenging tasks • Not always working hard • Minimal attempts to act on feedback • Requires close supervision to ensure tasks are attempted and instructions followed • Misses some deadlines 	<p>4 Disengaged (Poor effort)</p> <ul style="list-style-type: none"> • Shows little or no focus • Work often incomplete or inadequate • Does not attempt to act on feedback • Does not engage unless closely monitored • May refuse support • Misses most deadlines • Does not listen



Rewards & Sanctions

The Cottingham Culture takes into account that:

- All young people enjoy being effectively rewarded for their effort
- Most young people need clear guidance in terms of what constitutes acceptable behaviour
- Effective communication between teachers, parents/carers and students is essential for an effective school

The Student Planner

The Student Planner is central to student organisation access. Students record their behaviour and attendance data each week and also use it to create targets for themselves during personal development time.

Rewards

Your child will receive positive points which are recorded on Arbor for positive engagement in the classroom and around school.

Points can be used to purchase prizes from The Rewards Shop.

Certificates and other rewards will also be awarded for various other achievements across the school.

Classroom Sanctions

The following stepped consequences or stages will be applied when students fail to follow expectations.

Consequence codes are issued when a student does not demonstrate the expected behaviour.

Expectations will be displayed clearly around the school and in classrooms. A student will receive clear explanations at each stage.

Warn: Verbal warning.

Move: Behaviour is moved to the next level. Logged on Arbor.

Remove: Student is removed from the classroom and taken to our 'reflection' room for a period of time.

All logged on Arbor.

Serious Incident

If your child has been involved in a serious incident, they will spend time in our Reflection Room.



Student Well-being

Supporting students' emotional health and well-being has always been at the forefront of our pastoral package.

We realise that this offer is vital in providing students with the care that they may require. We have put a diverse package of support in place to ensure we have the resources to effectively support and advise students. If you are concerned about your child's well-being, please contact your child's Head of Year 7.

“Our school well-being dogs, regularly attend the school to help improve students' emotional, physical health and social interactions.”

There are four main elements to our Child Protection and Safeguarding Policy:

Prevention: We promote a positive school atmosphere and provide strong pastoral care and support to students and young people, through safe and appropriate working practices.

Protection: We follow agreed procedures and make sure our staff are fully trained and supported to respond appropriately and sensitively to child protection concerns.

Support: We offer support, advice and guidance to learners, parents/carers and staff in situations where there are safeguarding concerns around a child or young person.

Collaboration: We work together with all our students, parents/carers, staff and external agencies to promote a safeguarding culture in order to ensure the well-being of all our students.



Frequently Asked Questions

What should my child do if there is an issue with their uniform?

Students should always be in the correct school uniform. If there is a problem, please inform the school and write a note for your child. They should then go to Student Services where, in most cases, we can supply a temporary replacement.

What should my child do if they feel ill during the school day?

We encourage all students to stay in school as long as they are well enough. If they begin to feel unwell, they should tell a member of staff who can alert our First Aid Officer who will make contact with you if needed.

What should my child do if they are running late to school?

It is important that students attend school and they are on time. If there is an issue, please contact the school to inform us of the reason for the late arrival.

What should my child do if they have not completed their homework?

All students are expected to complete independent learning to the best of their ability and on time. Homework Club and the Library are available if students need support. If they are having problems, they should tell their teacher before the homework deadline so that support can be given.

Daily Routines

Free Breakfast Club from 08:00 to 08:30.

Travel

If you are bringing your child by car, please park on Harland Way at either end of the yellow lines to keep the bus lay-by free and help us to ensure that our students remain safe.

Please do not use the staff car park for student drop off/collection. The entrance/exit barrier will be closed at **14:55 – 15:15** each day to allow for the safe departure of our students.

If your child is travelling by bus, please see our website for the bus services we have available at: **www.cottinghamhigh.net**. If your child is cycling to school, we insist that they wear a suitable cycle helmet. We have bicycle sheds for students to lock their bikes in, therefore, we ask that students please bring a suitable lock with them.

At lunchtime

All students must remain on the school premises unless a pass has been authorised to go home for lunch.

A wide range of food is available from Caterlink, our catering supplier, or students may bring a packed lunch.

Signing Out

Appointments should be made outside of school hours wherever possible.

If your child must leave school during the day for any reason, then a note from a parent/carer in advance of the date is required in their planner. Students must sign out at Student Services. If they return to school later that day, they must sign in again.

The School Day

Students need to be on site and lined up in their registration groups on the Key Stage 3 playground for 08:30.

Please arrive at the entrance (top or bottom gate) by 08:25 to allow you to be punctual and lined up ready for 08:30.

Students can go to the Library, the Key Stage 3 playground or Key Stage 3 social area if they wish.

Additionally, there is a Free Breakfast Club from 08:00 to 08:30.

The names of students who arrive late to school are recorded. Patterns of lateness may result in sanctions. If a student arrives to school without the correct uniform or equipment, Student Services will provide a replacement. A note should also be written in the planner by a parent/carer to provide an explanation.

Tutor Time/ Assembly	08:35 - 09:10
Period 1	09:10 - 10:10
Break Time	10:10 - 10:25
Period 2	10:25 - 11:25
Period 3	11:25 - 12:25
Lunch Time	12:25 - 13:05
Period 4	13:05 - 14:05
Period 5	14:05 - 15:05
After school sessions/enrichment	15:05 - 16:05

Equipment

Students are expected to arrive at school with the correct equipment each day.

A student planner will be provided to each student free of charge at the beginning of the school year. Replacement planners are available at a charge.

It is the students' responsibility to be organised with the right equipment, ready to start the school day.

You can help by making sure that your child has a weather-resistant bag, large enough to carry an A4 folder and the following equipment:

- Pencil case
- Black/blue pen
- Green pen
- Pencil
- Rubber
- Ruler
- Glue stick
- Purple pen
- Highlighters
- Scientific calculator
- Coloured pencils
- Sharpener
- Water bottle
- Reading book



“It is the students' responsibility to be organised with the right equipment, ready to start the school day.”

Our Uniform



The wearing of uniform gives every student a sense of identity, equality and discipline as a member of the school community.

The uniform encourages students to feel a sense of pride and a sense of belonging to the school.

In addition, the uniform sets clear expectations, ensures health and safety and provides a conducive learning environment for all students in preparation for their future working life.

If at any time there are any queries regarding permitted styles, parents/carers should contact the school, particularly prior to purchasing garments via email: CHSTransition@cottinghamhigh.net.

If any parents/carers are experiencing difficulties regarding the uniform, please contact the school without delay.

- **Blazer:** Black with official school logo.
- **Jumper:** Plain black v-neck, with or without school logo. (Optional)
- **Trousers:** Smart, tailored, plain black, formal uniform type. No Lycra, jean, cotton, or cord type material (worn with black socks).
- **Black Pencil or Box Pleated skirt:** Worn with black tights at least 60 denier or black socks. Skirts must sit no more than just above the knee. They must not be of jersey material.
- **Tailored Black Trouser Short** (not sport shorts) can be worn in summer term.
- **Shirt:** Plain white, long or short sleeved, formal uniform type of standard length to tuck in and with standard shirt type collar.
- **Tie:** Red tie with the school logo (KS3). Black tie with the school logo (KS4).
- **Footwear:** Plain black, black laces, polishable leather or leather-look shoes or ankle boots with flat or low heels. Shoes with logos in contrasting colours are not permitted. No other type of shoe (e.g., fabric, sandals) is allowed.

Our PE Kit



- Black and red panelled polo shirt school logo.
- Black and red panelled zip up top/rugby shirt with school logo (optional).
- Plain black sports shorts or skort (suitable length), cycling shorts or Lycra shorts, Nike 3 inch or 5 Inch shorts (or similar brands) are not permitted in place of shorts but can be worn underneath.
- Black and red panelled Cottingham High School skort (optional).
- Plain black sports leggings (optional).
- Black base layer top (optional).
- Plain black football socks.
- White socks (indoor and summer activities).
- A change of trainers (if wearing trainers for school footwear).
- Football boots.

Jewellery/Piercing: Not allowed.

Hairstyles: Long hair must be tied back for every lesson.

Our uniform supplier is Steady Schoolwear.
www.steadyschoolwear.co.uk

Uniform items can be purchased from Steady Schoolwear, either online or in store.

29 Holderness Rd, Hull HU8 7NA.

Tel: 01482 322982

Email: sales@steadyschoolwear.co.uk

All students are expected to bring and wear their PE kit for every lesson, even if they are unable to take part. This means they can still be involved in learning and support the session; wearing their kit ensures that, in inclement weather, if it becomes wet, they can change back into dry school uniform afterwards.



Extracurricular and Enrichment



We offer a wide range of extracurricular activities to our students.

Our staff are very generous with their time in order to enrich students' experiences and a large number of clubs and activities are available, covering a wide range of interests.

Extracurricular: The offer of extracurricular is continually developed and refined to meet the ever-changing needs of students.

These include: Active Travel Ambassador, Angling Club, Art, Athletics, Basketball, Board Games, Brass, BSL/-Makaton, Chess, Choir, CHS Horizons (details coming soon), Coding, Computer Club, Dodgeball, DofE, Environmental Club, First Aid Club, Fitness, Football, Homework, Netball, Orchestra, Percussion, Pickleball, Rock Band, Rounders, Rugby, Science, Softball, Soul/Woodwind, Spanish, String, STEM, Tennis and Volleyball.

Trips and Visits: Students are given the opportunity to go on a variety of trips and visits which are both local and further afield. Students are encouraged to engage with cultural opportunities which go beyond their day-to-day experience at school.

Enrichment Activities: Students can take part in enrichment programmes, specific to their year journey within school. These may include Emergency First Aid and Prison Me No Way.

“Students are given the opportunity to go on a variety of trips and visits which are both local and further afield.”

Cultural Opportunities: We believe it is important that every student experiences a wide range of cultural experiences. For those students who have had limited cultural experiences outside of school, we aim to go the extra mile for these students.

Opportunities have previously included live theatre, cultural visits to art galleries, annual school productions/showcases, Duke of Edinburgh Awards and Camps International.

Students at Cottingham High School also have the opportunity to perform music concerts at local community events.



Our House System

The Cottingham Constellations

Cottingham High School has a long and proud history, stretching back to its beginnings in the 1950s.

In those early years, our school wasn't just new buildings on a former Georgian estate. It wasn't just classrooms built on land once used as farmland, barracks, gardens or even medieval hunting grounds! It was the start of something bold: a comprehensive community school with its own traditions, identity and spirit.

Why Constellations? Why Now?

Our new House system:

- honours 70 years of school history, reigniting a tradition from the school's earliest days
- connects today's students with the generations who came before
- strengthens belonging across year groups
- supports our values of **Ambition, Pride & Respect**
- gives every student a community, an identity and a team to be proud of

One of the earliest traditions in our school was its House system. Every student was part of a House, and through the House structure, students competed, celebrated, and built friendships across year groups.

And those early houses had something special about them: they were named after constellations. For almost 20 years, students at Cottingham Secondary School belonged to Houses inspired by the night sky. This wasn't accidental. Constellations symbolised: the idea that every student could look up and aim higher than they thought possible. As the school evolved — new buildings, new structures, new leaderships — that original constellation system faded. But the spirit of **ambition, pride, and respect** continued to shape the school.





CYGNUS

Swan

- **Cygnus** travels long distances across the sky, symbolising determination and graceful ambition. Once seen as the Northern Cross, it is one of the most recognisable constellations — a sign of dignity, identity and unity. Cygnus teaches that we move further when we move together.



LUPUS

Wolf

- **Pegasus** represents imagination and the courage to strive beyond boundaries. A striking constellation, Pegasus stands for creative ambition - rising above limitations and daring to dream. It represents quiet confidence and respectful strength.



PEGASUS

Horse

- **Lupus** symbolises strategic ambition - working together, planning carefully, striving as a team. Wolves are symbols of belonging and pride in a community. Lupus teaches loyalty, fairness and mutual respect.

- A circumpolar constellation, always visible in the night sky, **Ursa** symbolises perseverance and steady aspiration. For centuries, Ursa Major has helped travellers navigate using the North Star. It represents responsibility, reliability and leading by example.



URSA

Bear



“These constellations connect the past, present and future of Cottingham High School.”



School Payments

Cottingham High School is cashless.

This means that we are unable to accept cash or cheque payments. Any payments parents/carers need to pay to the school (such as for dinner money and school trips) should be paid through the Arbor parent portal.

You will be given a login once your child starts at Cottingham High.

As part of our cashless catering system, Cottingham High operates a biometric registration process. For your child to obtain lunch from one of the catering outlets available, they will need to have been registered on the biometric fingerprint recognition system. Alternatively, your child can provide their name on the system.

“For your child to obtain lunch from one of the catering outlets available, they will need to have been registered on the biometric fingerprint recognition system.”

Catering

Our school's catering provision is provided by our external catering contractor, Caterlink.

We are very proud of the service and standard of food provided and we receive regular feedback on our catering provision from students, parents and visitors to the school.

A wide range of food is on offer at both morning break and lunch time. We also have a free breakfast club which includes a free slice of toast and a drink for all students and staff. Weekly menus and further information on the catering available can be viewed on our website.

Free School Meals – Apply Now for September 2026

More families may now be eligible for Free School Meals due to changes to Universal Credit. If your child currently receives FSM, your local authority is already in the process of reassessing your eligibility.

- Apply by Friday 18 July to avoid disruption
- Quick and easy application through East Riding Council
- Or call 01482 394799 or make an appointment at a customer service centre
- Could save families around £400 a year

All applications are confidential, and children are not treated differently.

If you may be eligible, we strongly encourage you to apply.





Term Dates 2026-27

Autumn Term

School re-opens for students:
Wednesday 9 September 2026

School closes:
Thursday 22 October 2026

School re-opens for students:
Monday 2 November 2026

School closes:
Friday 18 December 2026

Spring Term

School re-opens for students:
Tuesday 5 January 2027

School closes:
Friday 5 February 2027

School re-opens for students:
Monday 15 February 2027

School closes:
Friday 19 March 2027

Summer Term

School re-opens for students:
Tuesday 6 April 2027

May Day Bank Holiday:
Monday 3 May 2027

School closes:
Friday 28 May 2027

School re-opens for students:
Monday 7 June 2027

School closes:
Thursday 22 July 2027

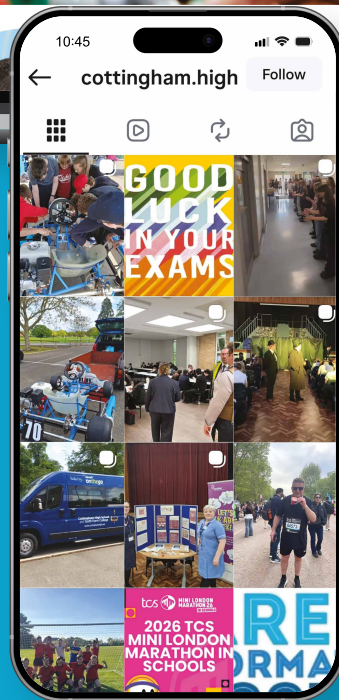
Keep up to date with school life...



Keep up to date with school life and activities by regularly visiting our website, Facebook page and Instagram.

 Cottingham High School

 cottingham.high



www.cottinghamhigh.net



Cottingham
High School

Cottingham High School

Harland Way, Cottingham, HU16 5PX

Tel: (01482) 847498, office@cottinghamhigh.net

All information is correct at time of printing and is subject to change without notice.